

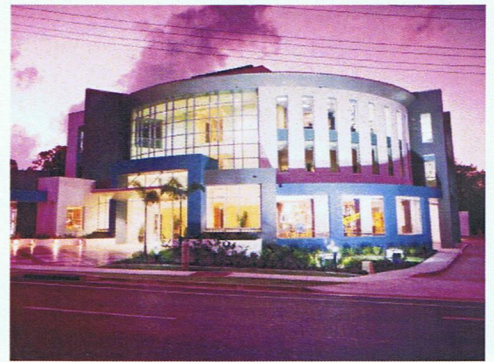


# Summer Newsletter

**Southport:** Level 1, 95 Nerang St  
(07) 55 284 800

**Robina:** Suite 34, Level 3, 58 Riverwalk Ave  
(07) 55 752 777

[www.eyesight.net.au](http://www.eyesight.net.au)  
[visioncentre@eyesight.net.au](mailto:visioncentre@eyesight.net.au)



## Australian National Safety and Quality Health Service (NSQHS) Standards

The Australian Commission on Safety and Quality in Health Care (ACSQHC) was created by Health Ministers in 2006 to lead and coordinate health care safety and quality improvements in Australia. The NSQHS have implemented guidelines and standards to provide a nationally consistent statement of the level of care consumers should be able to expect from health services. The Vision Centre Gold Coast and Vision Centre Day Surgery continue to maintain these standards and we are ready for our first survey will take place in February.

### Eyelea® (Aflibercept)

For "Wet" Macular Degeneration

Bayer HealthCare has received approval from the Australian Therapeutic Goods Administration (TGA) for EYLEA® (aflibercept). The latest in Anti-VEGF therapy, Eylea is an exciting new treatment for neovascular Age-related Macular Degeneration (Wet AMD) and Macular Oedema.

With predictable pharmacology that supports extended dosing intervals, compared to current drug options, this new therapeutic agent may allow for less frequent clinic visits and fewer injections – improving patient experience and reducing associated risks such as infection. This new drug is available currently.

### Lucentis RVO Programme

Treatment for Macular Oedema\*

Novartis, the makers of Lucentis® (ranibizumab), have made their product more available for wider use. Lucentis is indicated for neovascular membranes and macular oedema. Currently the PBS programme limits the authority of supply exclusively for the treatment of subfoveal choroidal neovascularisation due to age-related macular degeneration.

The Lucentis RVO familiarization programme offers Doctors the opportunity to supply Lucentis to a limited number of patients with macular oedema secondary to retinal vein occlusions at no charge (for the Lucentis itself) until late August 2013.

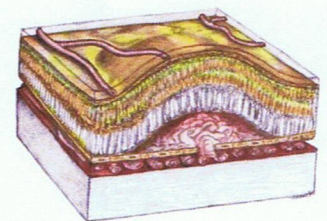
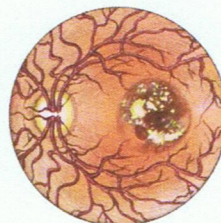
\*Macular Oedema secondary to Retinal Vein Occlusion (RVO)

### Macular Degeneration

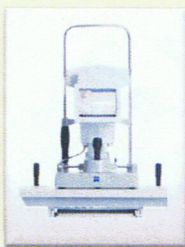
An Overview

Macular degeneration is the leading cause of irreversible vision loss in the industrialized world. Classically there are two broad types: dry and wet. The hallmark of the dry, or non-exudative form, is the deposition of extracellular material beneath the retina leading to "drusen". There are limited medical treatments for patients with dry AMD beyond adequate quantities of antioxidants (including vitamin A & E, zinc, and lutein); however dry AMD can progress to the wet, or exudative, form. Wet AMD is a pathological process in which new blood vessels grow underneath the retina forming choroidal neovascular membranes (CNVM). These vessels can leak fluid and blood, and, ultimately, cause scarring and vision loss if left untreated.

Wet AMD is treated medically with VEGF (vascular endothelial growth factor) inhibitors. This is typically required long term. Contemporary therapeutic agents for the treatment of wet AMD included Lucentis® and Avastin®; now with the introduction of Eylea, newer therapeutic agent, we can extend the interval between injections with more confidence.



Exudative Age-related Macular degeneration



IOL Master 500 by Zeiss

### IOL Master 500 by Zeiss

We have upgraded our biometry equipment to include the IOL Master 500. This technology provides high resolution non-contact measurements of a patient's eye so that the power of intraocular lenses can be calculated and tailored for patients. This new, patient friendly, platform provides low-hassle biometry and improved confidence in lens selection for Cataract Refractive surgery.

With the most up to date methods of calculating lens power - we are able to confidently provide our patients the best possible outcomes following cataract and refractive surgery.

## Light Rail

### Public Transport Network

Road works for the first stage of the Gold Coast Light Rail is nearing completion linking Gold Coast University Hospital to the heart of Southport, Surfers Paradise and Broadbeach. There will be 16 sheltered stations along this route including the "Gold Coast Hospital Station" stopping within walking distance of the Vision Centre Southport. Passenger transport services are expected to start mid 2014; giving our patients convenient and practical access to public transport. So why not catch the Tram for future appointments?

#### Route: Stage 1

- University Hospital
- Griffith University
- Queen Street
- Gold Coast Hospital
- Southport
- Southport South
- Broadwater Parklands
- Main Beach
- Surfers Paradise North
- Cypress Avenue
- Cavill Avenue
- Surfers Paradise
- Northcliffe
- Florida Gardens
- Broadbeach North
- Broadbeach South

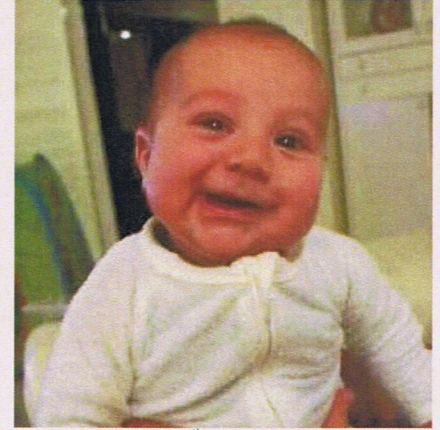


Adapted from: <http://golding.com.au/>

## New Addition to the Vision

### Centre Family

The Dr Nathan Walker and his wife Dr Kathy Monypenny welcome a new addition to our family with their newborn son, Eamon Walker



Born: 9<sup>th</sup> of June 2012

## Our Two Offices – Southport and Robina

The Vision Centre Gold Coast is a comprehensive eye care facility, based at Southport and Robina, on the Gold Coast. The Vision Centre Day Surgery, a dedicated Ophthalmic day surgery facility with advanced technology, is located on the ground floor of our Southport practice

We are dedicated to excellence in the care of your eyes and your eyesight at our purpose built clinics.

The Vision Centre Gold Coast combines the expertise of a number of internationally qualified and recognised Ophthalmologists. We specialise in cataract-refractive surgery, vitreoretinal surgery, oculoplastics, glaucoma diagnosis and treatment, retinal diseases such as age-related macular degeneration and diabetic eye problems, tear duct and eyelid disease, adult strabismus, and general ophthalmology.

We provide active co-management of eye care with our patient's own local Optometrists and General Practitioners.

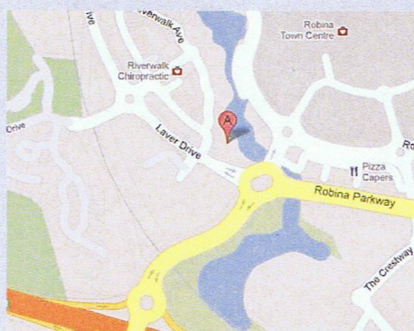
Both our offices are fully equipped, provide ample free undercover parking for our patients, and lift access to the clinics. We have easy access for the elderly and patients with disabilities as well as a friendly and comfortable environment for your visit.



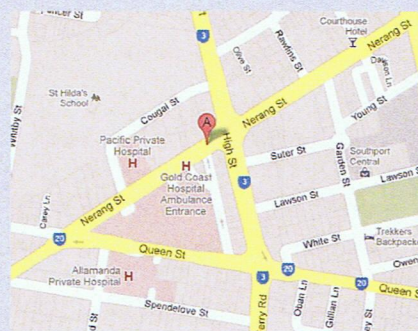
Front reception – Southport



Vision Centre Mid Coast - HQ Building, Level 3, 34 Riverwalk Drive, Robina



Maps adapted from maps.google.com



### Southport

**Phone:** (07) 55 284 800

**Fax:** (07) 55 284 822

### Robina

**Phone:** (07) 55 752 777

**Fax:** (07) 55 752 350

#### Dr Roger T. Welch

M.B.Ch.B

F.R.A.N.Z.C.O., F.R.A.C.S

Cataract/Refractive Surgery  
Retina – Vitreous, Glaucoma,  
Comprehensive Ophthalmologist

#### Dr André K. Théron

M.B.Ch.B, M.Med (Ophth)

F.R.A.N.Z.C.O., F.C.S.(SA)(Ophth)

Cataract/Refractive Surgery,  
Glaucoma, Comprehensive  
Ophthalmologist

#### Dr Cathryn Edrich

BSc. M.B.B.S (London)

F.R.A.N.Z.C.O., F.R.C.S.(Ed)(Ophth)

Medical Retina, Cataract Surgery

#### Dr Nathan Walker

BAppScOptom (Hons.), M.B.B.S  
(Hons.)

F.R.A.N.Z.C.O

Diseases and Surgery of the Retina,  
Vitreous and Maculae

#### Dr John S. Ambler

M.B.B.S (Hons)

F.R.A.N.Z.C.O., F.R.A.C.S

Diseases and Surgery of the  
Retina, Vitreous and Maculae

#### Dr Phung Vu

M.B.B.S, F.R.A.N.Z.C.O

Oculoplastic Surgeon  
Surgery of the Eyelids, Orbit  
and Lacrimal System

#### Prof. Lawrence Hirst

M.B.B.S (Hons.) (QLD)

M.D (QLD), M.P.H (Hopkins),

D.O (Melb.), F.R.A.N.Z.C.O.,  
F.R.A.C.S

Pterygium Surgery